

NOW LEASING

2602 Enterprise Way

UNIT #100



Contact:

leasing@stobergroup.com

250.763.2305

Salient Facts

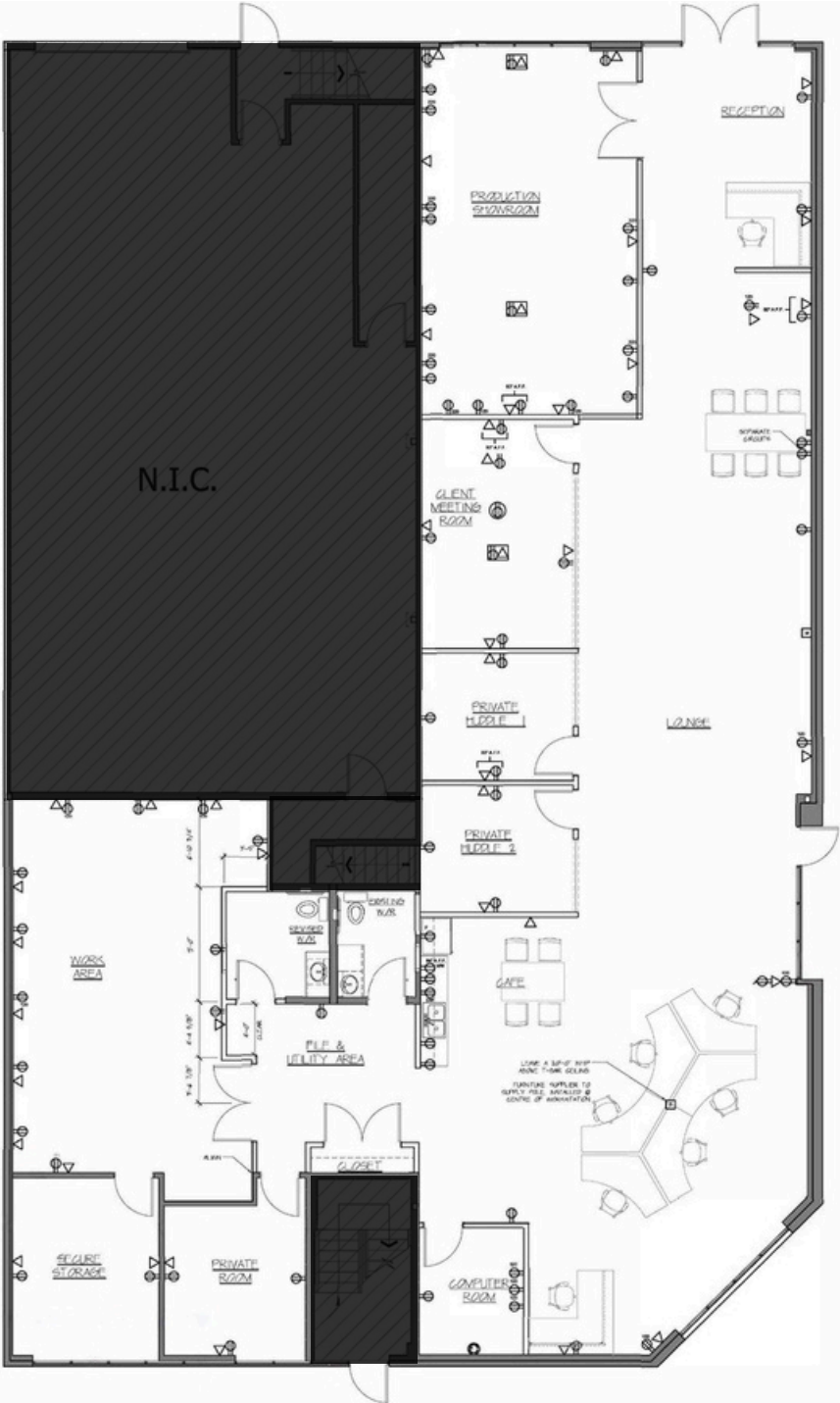
High-profile commercial space available at 100-2602 Enterprise Way, located in Kelowna's industrial hub with easy access to Highway 97 and numerous amenities.

This 4,464 square foot space enjoys prominent signage opportunities and includes private offices, open workspaces, a showroom, and a secure server room.

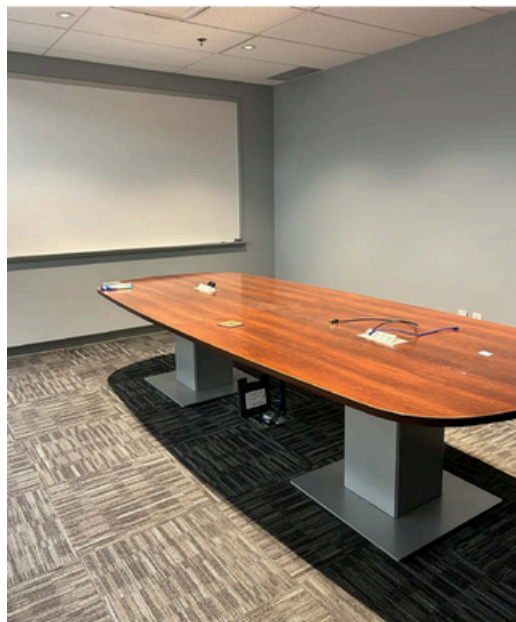


Address	100-2602 Enterprise Way
Size	4,464 Rentable SF
Parking	Ample On-Site Parking Available
Zoning	I1 - Business Industrial
Availability	Immediately

Floorplan



Gallery



Leasing Inquiries

leasing@stobergroup.com

250.763.2305

stobergroup.com

