

NOW LEASING

# Retail & Restaurant Spaces at Central Green

Vino Rosso



# Step Into Central Green

Central Green, a master-planned community by the Stober Group, is situated in the heart of Kelowna. With plaza-facing storefronts, these commercial spaces are ideal for coffee shops, boutiques, or personal services. Enjoy a large base of built-in clientele, fostering a vibrant and dynamic community. With a Walk Score of 93 and a Bike Score of 97, this is the perfect location for those who appreciate convenience and accessibility in a bustling urban setting.



Large clientele base provided by the residential buildings within the Central Green community



Direct access to downtown Kelowna via upcoming pedestrian overpass



Prime, high-visibility location with significant traffic flow



Ample customer parking on the podium



Steps from the popular Rowcliffe Park

# Site Overview

**403**

Residential Homes

**5,100 SF**

of Commercial Spaces Available to Lease

**Park Plaza**

Available Spring 2025

**Park East**

Available Late 2025

## Available Retail Space

Park Plaza		
Unit	Size	Patio Size
CRU 1	1476 sf	899 sf
CRU 2	2534 sf	N/A

Park East		
Unit	Size	Patio Size
CRU 1A	535 sf	N/A
CRU 1B	544 sf	N/A



FLOOR PLAN

# PARK PLAZA CRU 1

 CRU SIZE

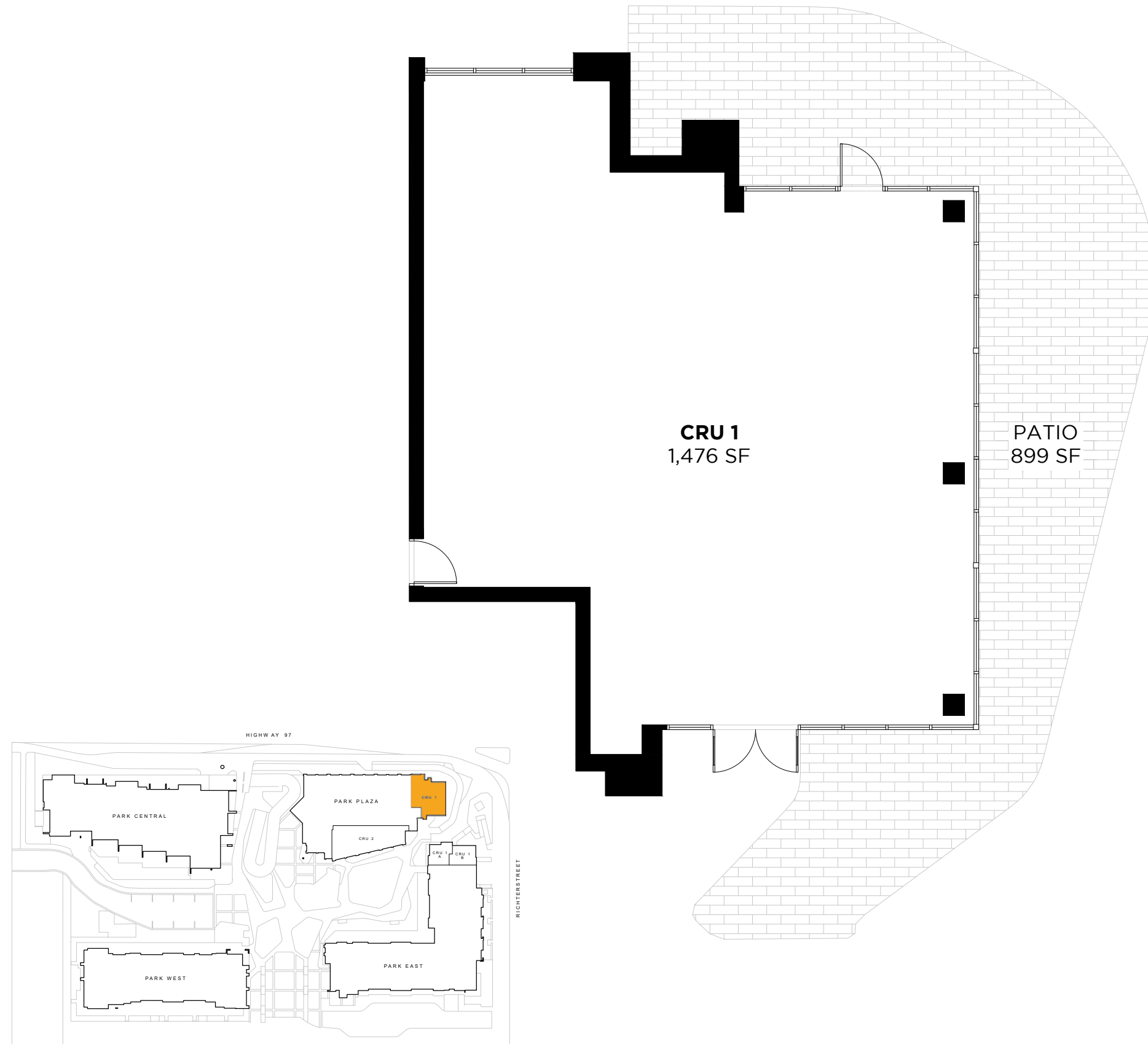
1,476 sf

 PATIO SIZE

899 sf

 LOCATION

Highway 97 and Richter Street



FLOOR PLAN

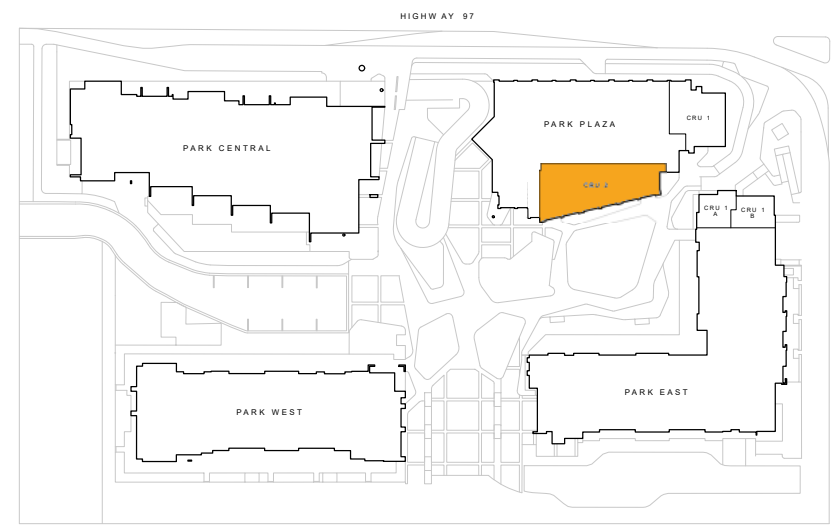
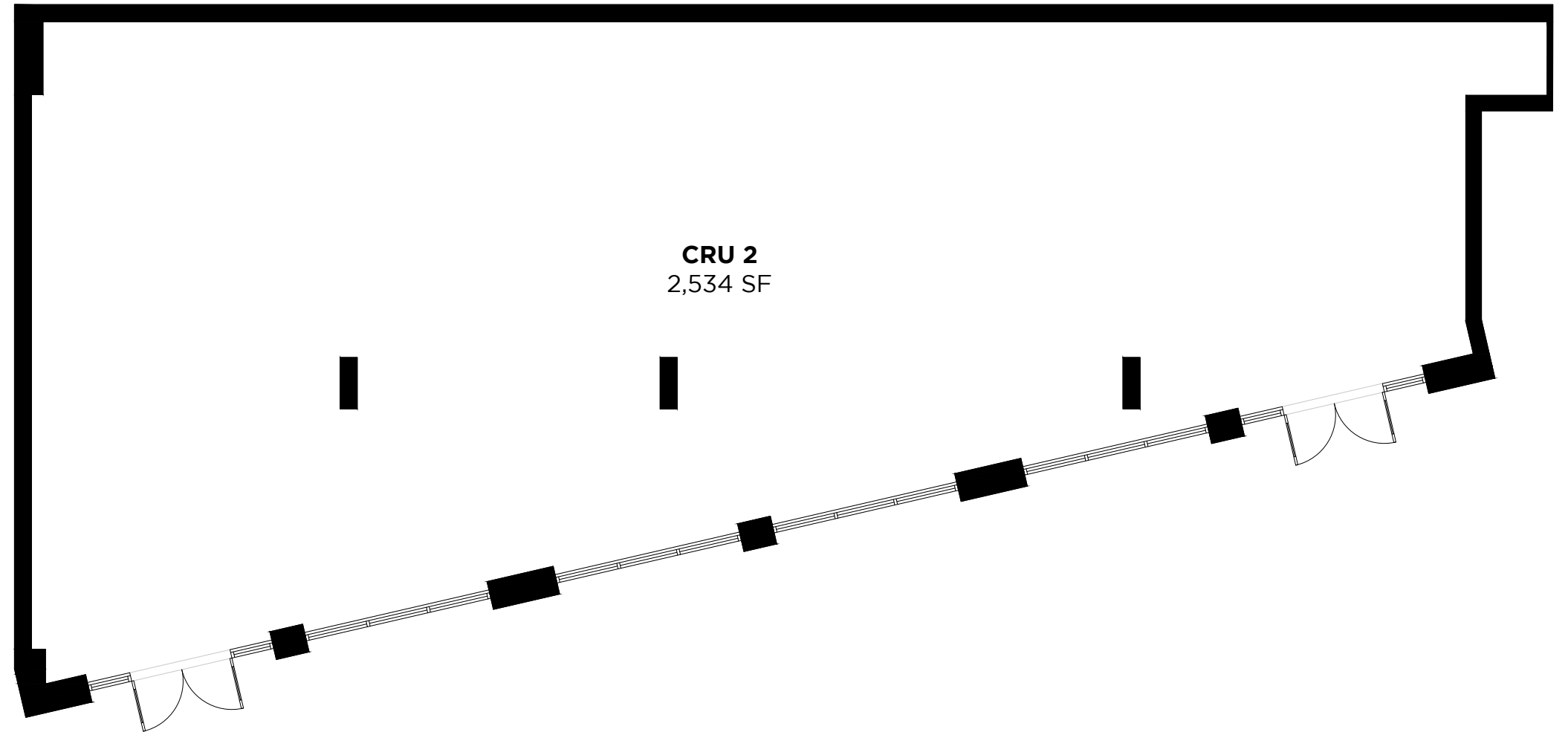
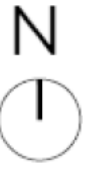
# PARK PLAZA CRU 2

 CRU SIZE

2,534 sf  
Potential to Demise

 LOCATION

South Face Plaza



FLOOR PLAN

# PARK EAST CRU 1

 CRU 1A SIZE

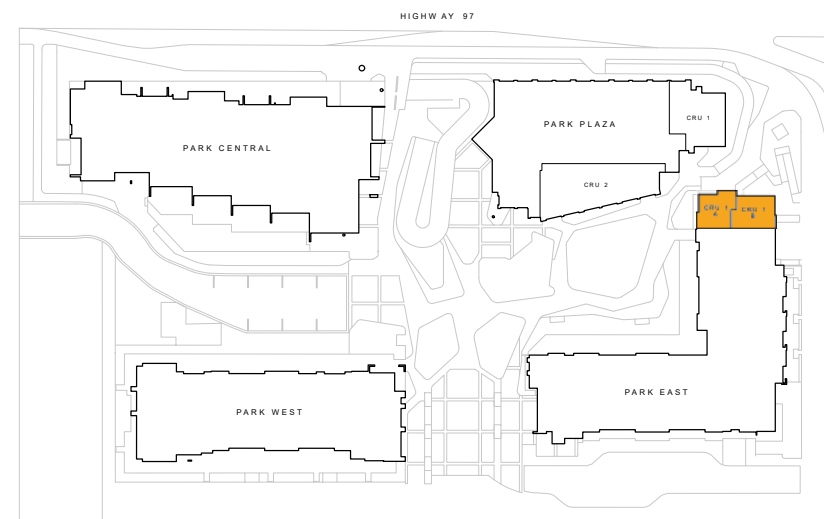
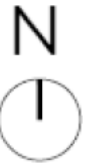
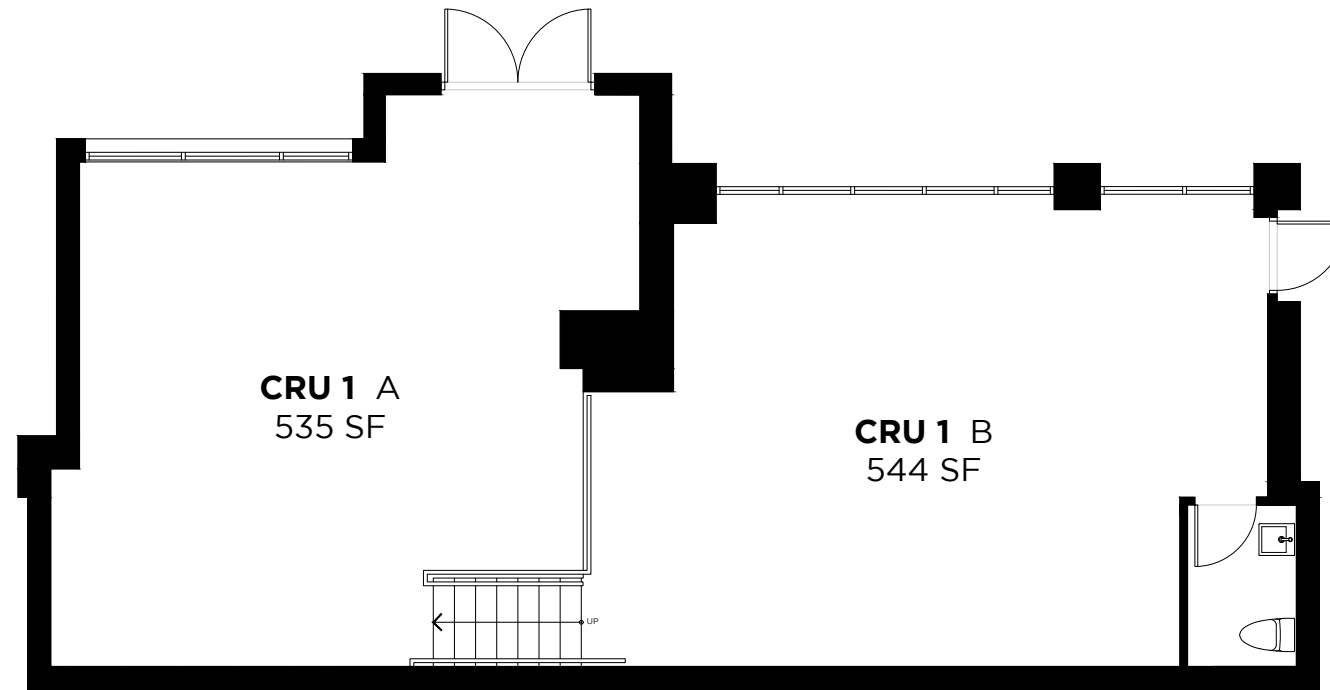
535 sf

 CRU 1B SIZE

544 sf

 LOCATION

Richter Street



# About



## The Developer

Stober Group's story began in 1957 when visionary builder, Al Stober, laid a foundation for growth in the vibrant Okanagan that blossomed over six decades into the development and construction of Stober Group communities throughout the region. From its inception as a construction company, Stober Group established itself as a leading community builder providing over 1 million square feet of commercial space and more than 1,100 residential homes in development or under management.

# Leasing Inquiries

## Stober Group Leasing

leasing@stobergroup.com

250.763.2305

Civic Address	1710 – 1740 Richter Street
Community Name	Central Green
GLA	5,100 sf
Parking	1.3 stalls per 1000 sf
Zoning	CD22 – Comprehensive Development Zone 22

