



Now leasing

Retail & Restaurant Spaces at Central Green





Step into Central Green

Central Green, a master-planned community by the Stober Group, is situated in the heart of Kelowna. With plaza-facing storefronts, these commercial spaces are ideal for coffee shops, boutiques, or personal services. Enjoy a large base of built-in clientele, fostering a vibrant and dynamic community. With a Walk Score of 93 and a Bike Score of 97, this is the perfect location for those who appreciate convenience and accessibility in a bustling urban setting.



Large clientele base provided by the residential buildings within the Central Green community

Prime, high-visibility location with significant traffic flow

Direct access to downtown Kelowna via pedestrian overpass

Steps from the popular Rowcliffe Park



Site Overview

403

Residential Homes

5,100 SF

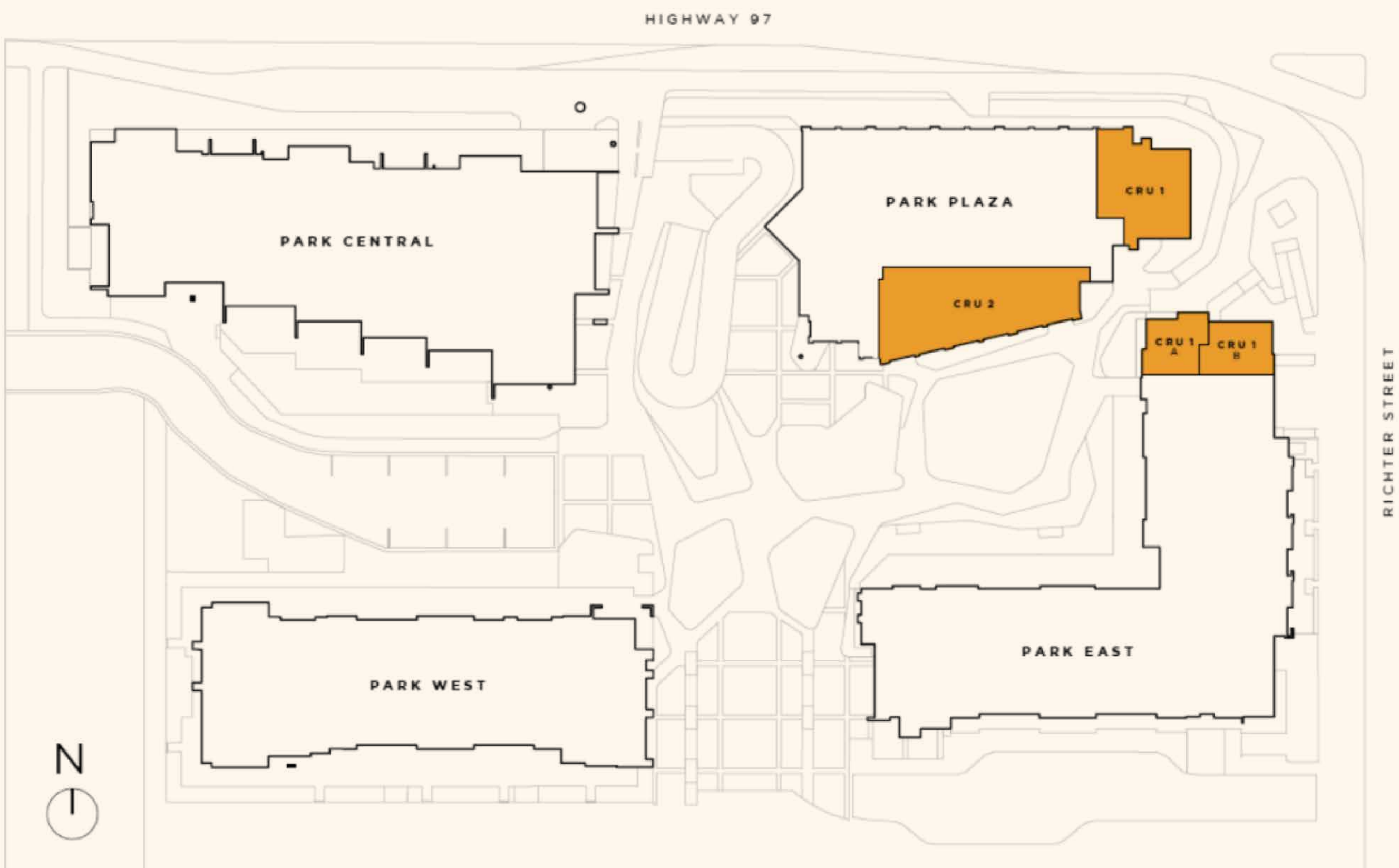
of Commercial Spaces Available to Lease

Park Plaza

Available Spring 2025

Park East

Available Late 2025



Park Plaza

Unit	Size	Patio Size
CRU 1	1476 sf	899 sf
CRU 2	2534 sf	N/A

Park East

Unit	Size	Patio Size
CRU 1A	535 sf	N/A
CRU 1B	544 sf	N/A



Floor Plan
Park Plaza CRU 1

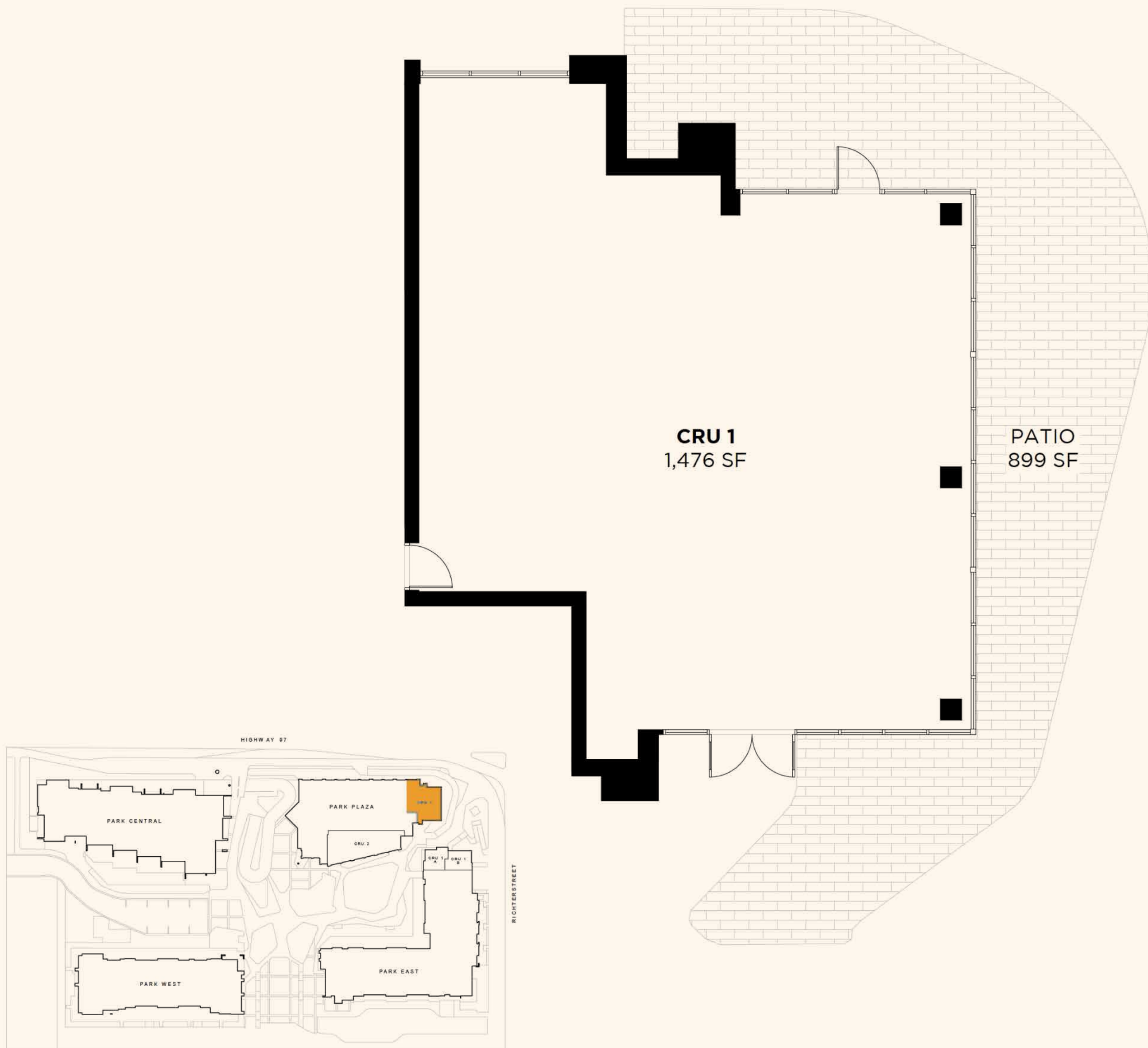
Highway 97 and Richter Street

CRU Size

1,476 sf

Patio size

899 sf





Floor Plan
Park Plaza CRU 2

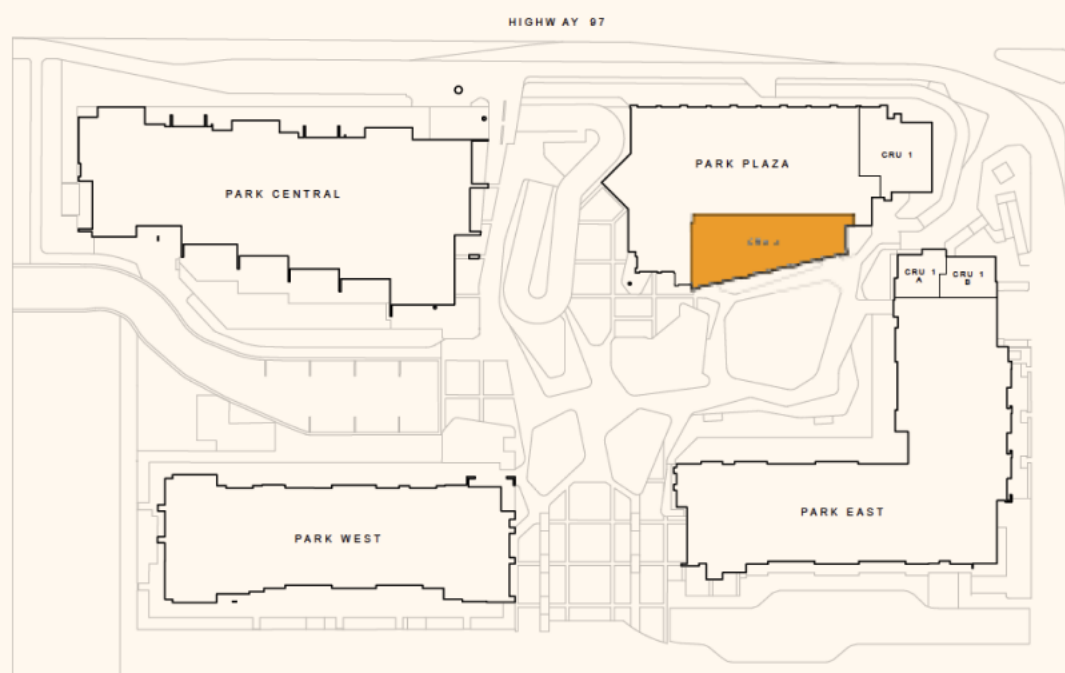
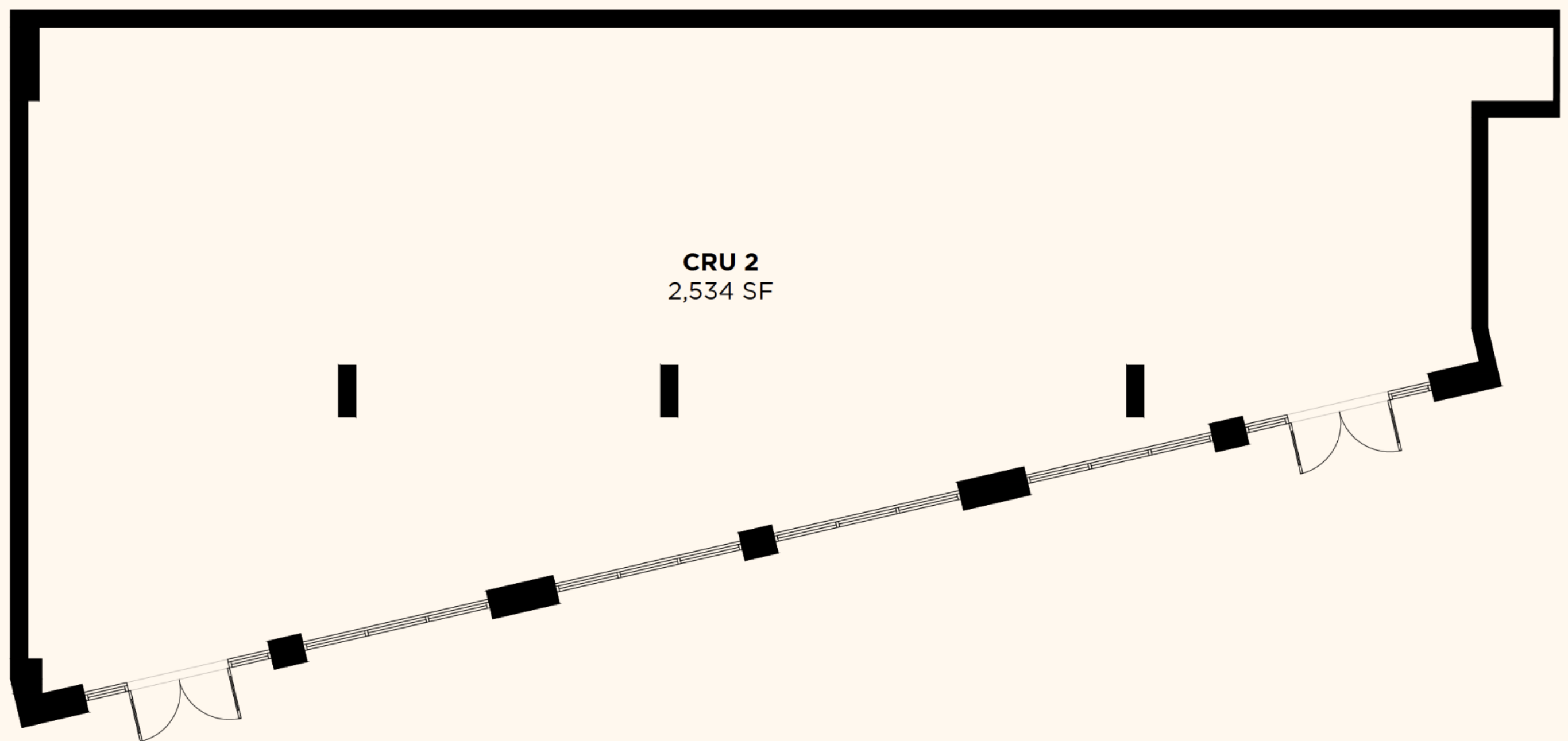
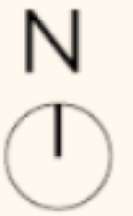
CRU Size

2,534 sf

Potential to Demise

Location

South Face Plaza



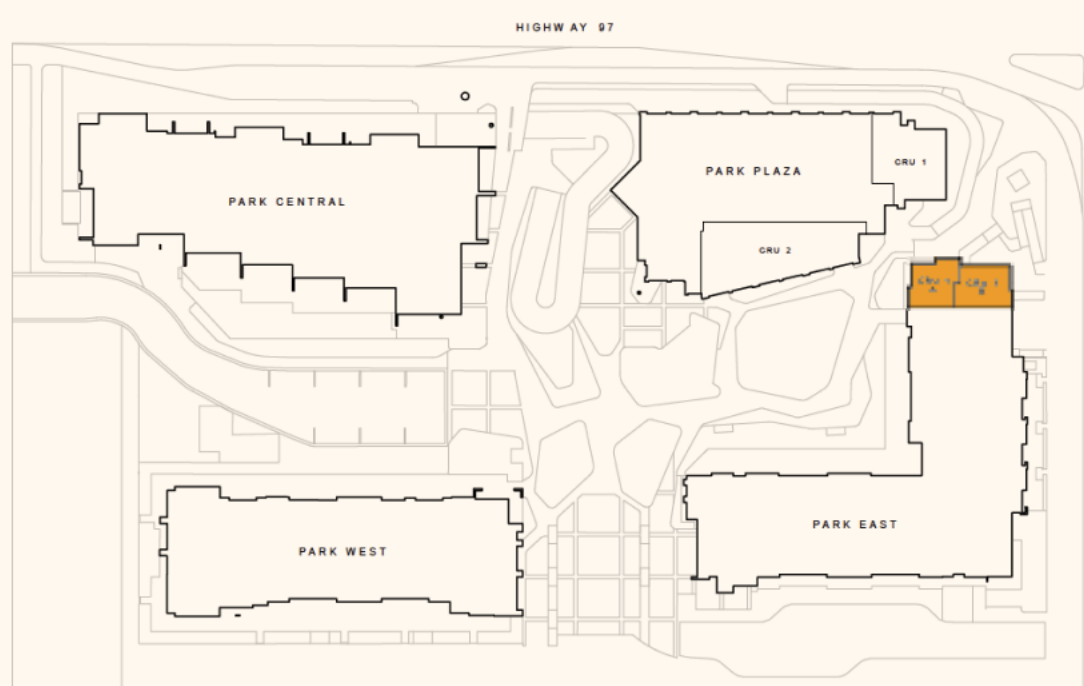
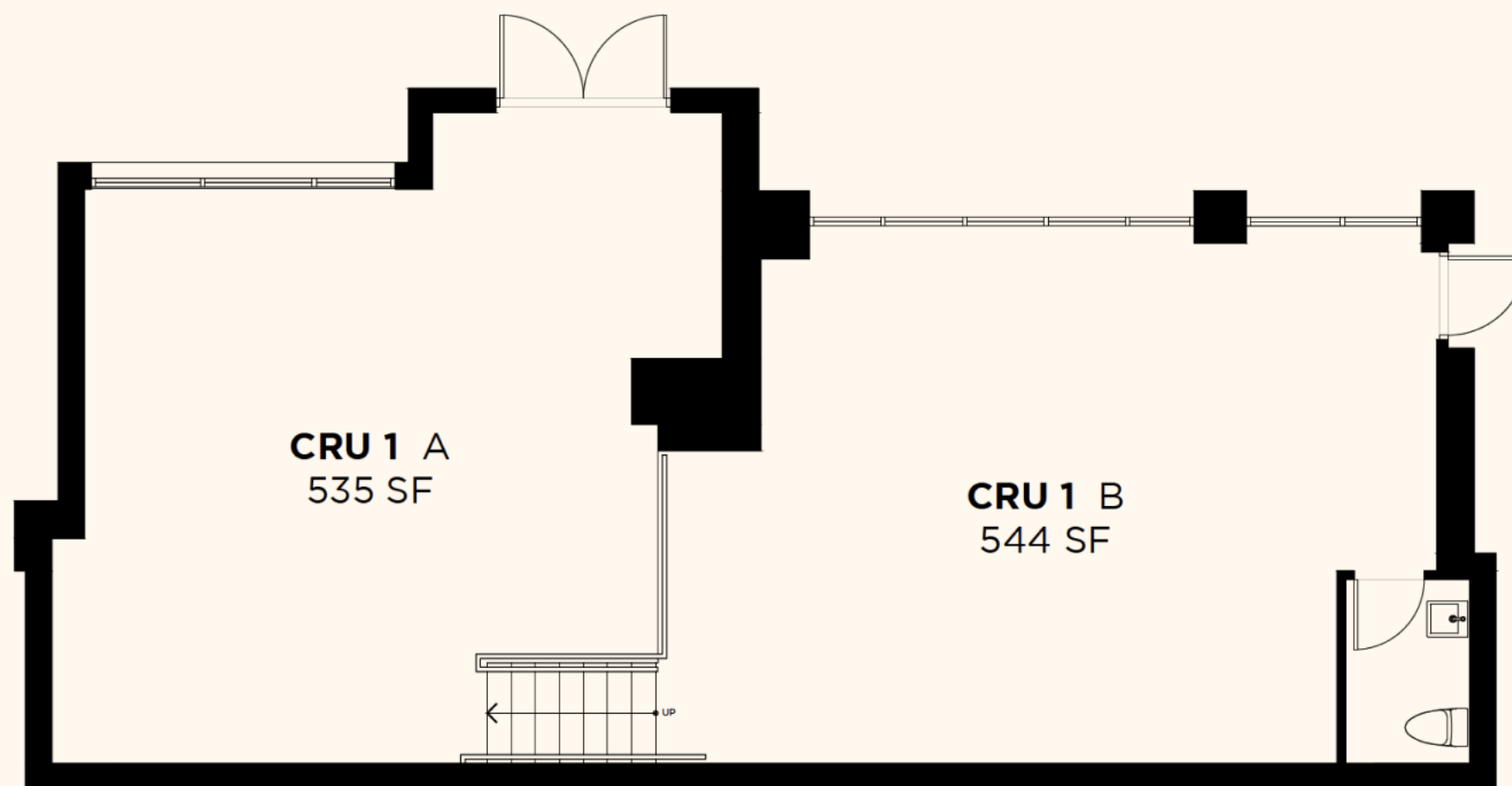
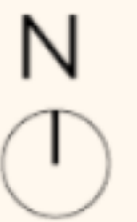


Floor Plan
Park East CRU 1

CRU 1A Size
535 sf

CRU 1B Size
544 sf

Location
Richter Street





About the developer

Stober Group's story began in 1957 when visionary builder Al Stober laid the foundation for growth in the Okanagan. Over six decades, his vision evolved into a legacy of community building, with over 1.1 million square feet of commercial space and more than 1,700 residential homes delivered. From its roots as a construction company, Stober Group has grown into a trusted leader shaping vibrant communities across Kelowna and the Okanagan.





Shaping the Future
of Community

Leasing Inquiries

leasing@stobergroup.com

250.763.2305

stobergroup.com

Address 1710 – 1740 Richter Street

Community Name Central Green

GLA 5,100 sf

Parking 1.3 stalls per 1000 sf

Zoning CD22 – Comprehensive Development Zone 22