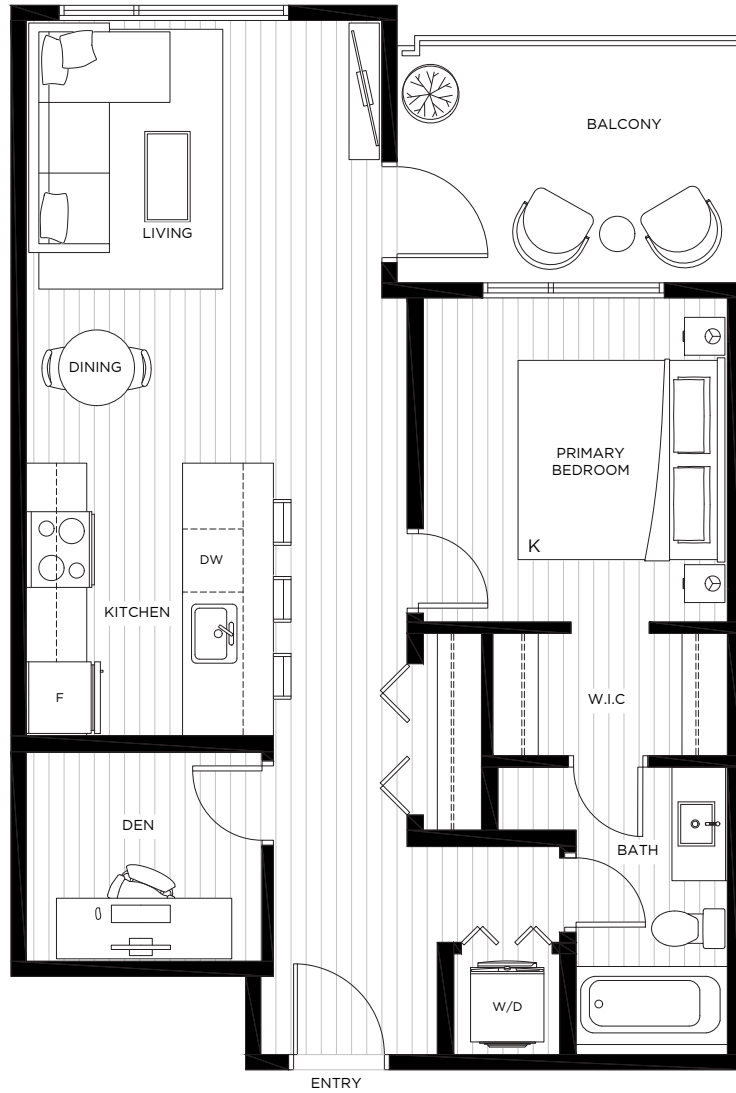


# B

# PARK CENTRAL

INTERIOR 694 SF | EXTERIOR 90 SF  
1 BEDROOM + DEN, 1 BATH



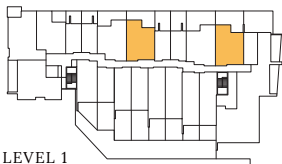
The developer reserves the right to modify or make substitutes to the building design, specifications and floorplans should they be necessary. Renderings, views, balcony/terrace sizes and layouts may differ than what is shown. E.&O.E. This is not an offering for sale. Such an offering may only be made after filing a disclosure statement.



# B1

## PARK CENTRAL

INTERIOR 684 SF | EXTERIOR 64 SF  
1 BEDROOM + DEN, 1 BATH



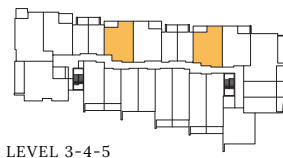
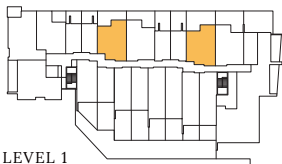
The developer reserves the right to modify or make substitutes to the building design, specifications and floorplans should they be necessary. Renderings, views, balcony/terrace sizes and layouts may differ than what is shown. E.&O.E. This is not an offering for sale. Such an offering may only be made after filing a disclosure statement.



# B2

## PARK CENTRAL

INTERIOR 686 SF | EXTERIOR 54 SF  
1 BEDROOM + DEN, 1 BATH



The developer reserves the right to modify or make substitutes to the building design, specifications and floorplans should they be necessary. Renderings, views, balcony/terrace sizes and layouts may differ than what is shown. E.&O.E. This is not an offering for sale. Such an offering may only be made after filing a disclosure statement.

