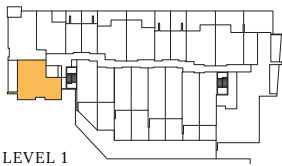


# C

# PARK CENTRAL

INTERIOR 964 SF | EXTERIOR 201 SF  
2 BEDROOMS + 2 BATHS



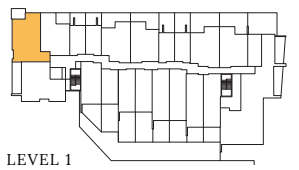
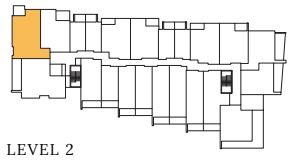
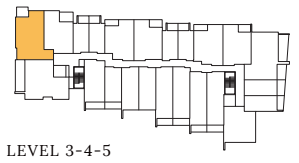
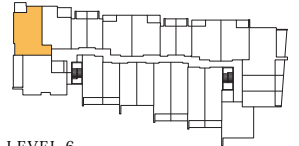
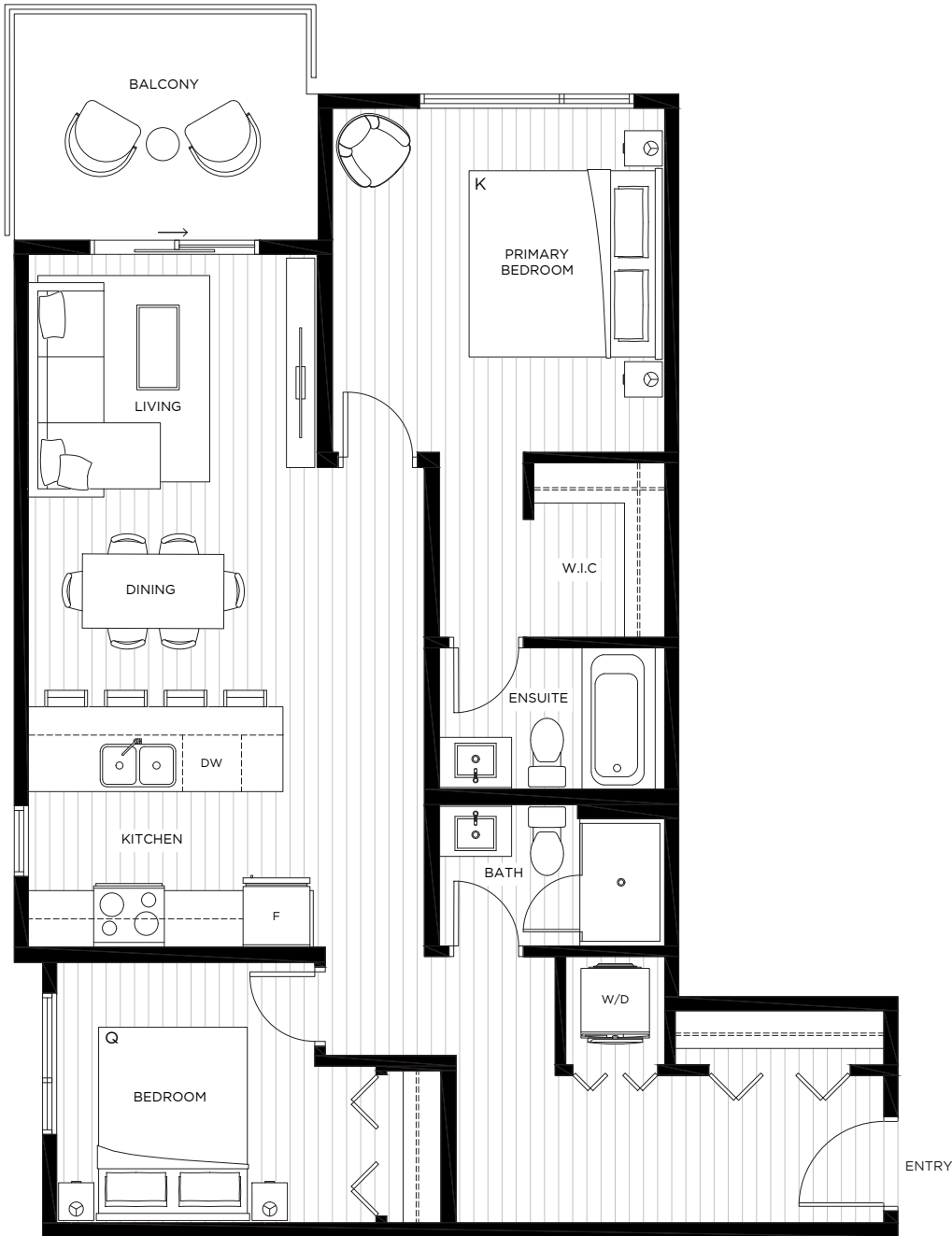
The developer reserves the right to modify or make substitutes to the building design, specifications and floorplans should they be necessary. Renderings, views, balcony/terrace sizes and layouts may differ than what is shown. E.&O.E. This is not an offering for sale. Such an offering may only be made after filing a disclosure statement.



# C2

INTERIOR 915 SF | EXTERIOR 75 SF  
2 BEDROOMS + 2 BATHS

## PARK CENTRAL



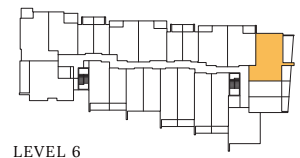
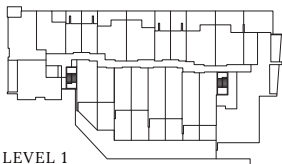
The developer reserves the right to modify or make substitutes to the building design, specifications and floorplans should they be necessary. Renderings, views, balcony/terrace sizes and layouts may differ than what is shown. E.&O.E. This is not an offering for sale. Such an offering may only be made after filing a disclosure statement.



# C3

# PARK CENTRAL

INTERIOR 902 SF | EXTERIOR 271 SF  
2 BEDROOMS + 2 BATHS



The developer reserves the right to modify or make substitutes to the building design, specifications and floorplans should they be necessary. Renderings, views, balcony/terrace sizes and layouts may differ than what is shown. E.&O.E. This is not an offering for sale. Such an offering may only be made after filing a disclosure statement.

